

THE ASHLAR

'Ashlar Stone' is a term for a style of masonry where the rocks are finely dressed by being cut and worked into cuboid shapes. It has been used for bridges and other stone structures for centuries and is still in use today. This bridge will add character and richness to its surroundings.



THE LINKS BRIDGES ADVANTAGE:

Our bridges really do out-perform the alternatives:

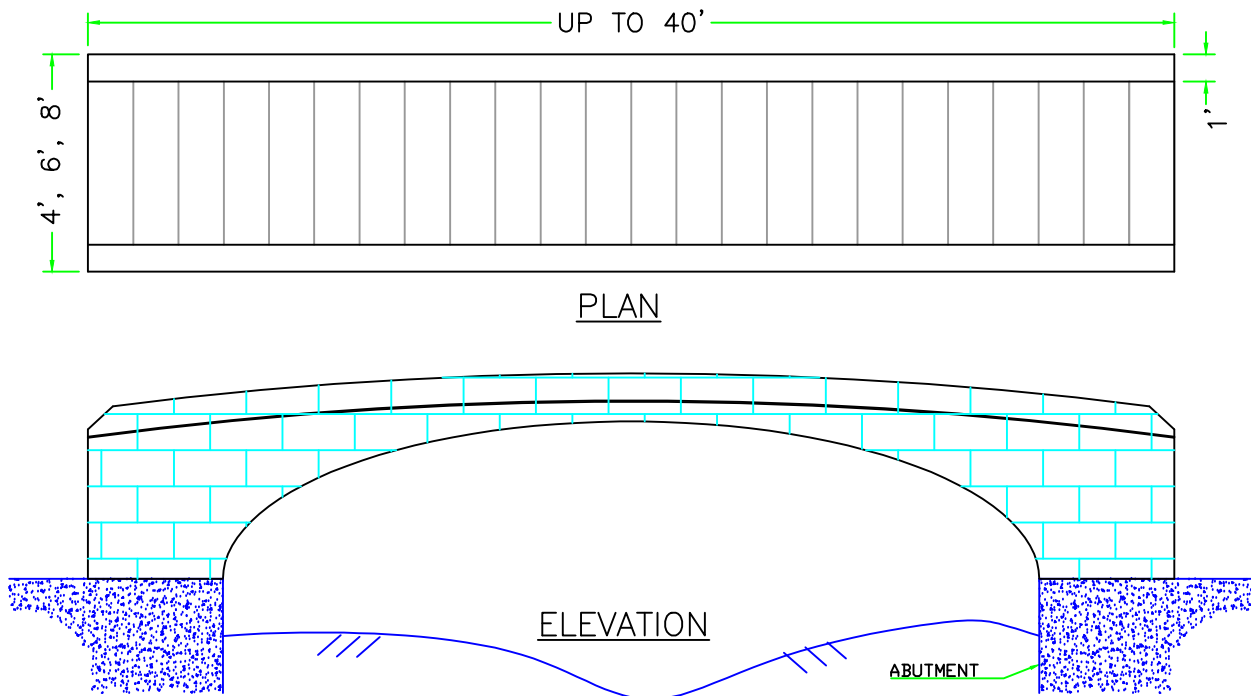
- **Longest Lasting** - Bridges will retain their structural integrity and appearance for 50+ years, far superior to any alternative using wood or metal components.
- **No Maintenance** - Never require painting, rust removal, replacing of rotting boards.
- **Easy Installation** - Bridges up to 50' are delivered in one piece ready for immediate installation and use.

BRIDGE SIZES AVAILABLE:

- Custom lengths 20' to 40'
- Standard widths 4', 6', and 8'
- Custom widths available

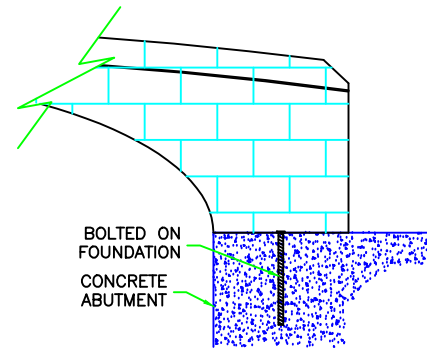
WE PROVIDE:

- Engineering (bridge & foundations)
- Custom manufactured bridge
- Delivery to your site
- Installation instructions or optional turn-key installation

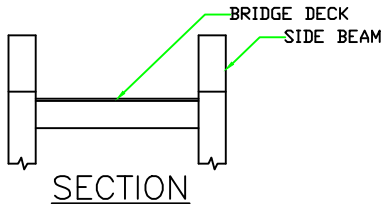


LOAD CAPACITIES:

- Engineered to requirements
- Standard Uniform Live Load = 85 PSF
- Vehicular Live Load = 4,000 lb, 6,000 lb, 8,000 lb, or 10,000 lb based on bridge application



TYPICAL INSTALLATION



BASIC PARAMETERS:

- Side beams
- Structural Deck designed for load requirements

BRANDING OPTIONS:

Your Logo embossed on the bridge deck!



A great feature to promote the strength of your unique brand.

MATERIALS - FIBER REINFORCED POLYMERS:

- Gelcoat - Polyester neo pentyl glycol type - non-fading, non-chalking, ultraviolet stabilized and scratch resistant.
- Resin - Fire retardant polyester type brominated reactor blended resin
- Glass - Fibers of glass to suit resin system
- Fine Aggregates for slip resistant deck surfaces
- Stainless steel bolts may be used for some connections
- High Density Polyethylene may be used in some guard rail options



PRICES:

Bridge prices are based on length, width and loading factors. As a bridge gets longer, the price per foot generally increases as the structural beams get larger. For your specific needs, contact us and you will get a quote by no later than the next business day.