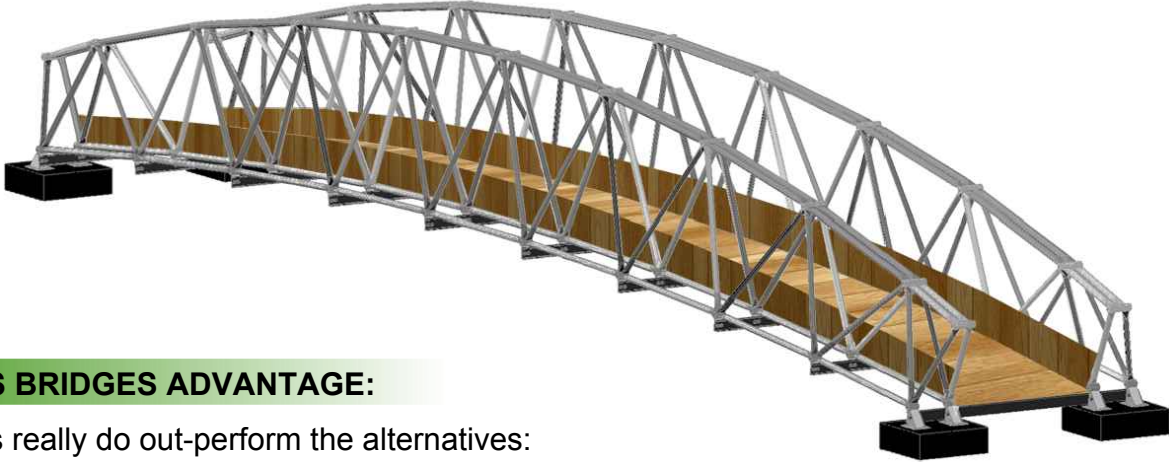


SIDE-BEAMER

SPACE FRAME

This is a classic bridge design using our space frame engineering technology. This bridge can span up to 150' in a flat or arched design. It provides a much more contemporary appearance compared to the more 'industrial-looking' big beam bridges. Its appearance can be enhanced with any of the Links Bridges' Composite Series designs as the deck and guard rails.



THE LINKS BRIDGES ADVANTAGE:

Our bridges really do out-perform the alternatives:

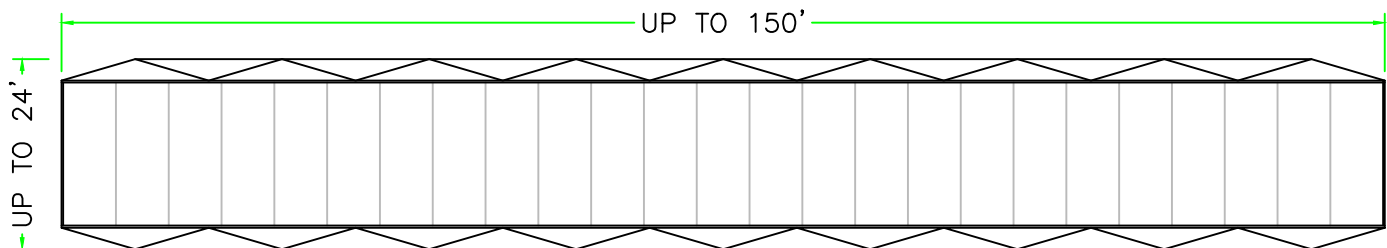
- **Longest Lasting** - The 'Space Frame' has a proprietary coating which outperforms galvanizing by a factor of 3 to 1. The remainder of the bridge is 100% FRP which will retain its structural integrity and appearance for 50+ years.
- **Less Maintenance** - Compared to a traditional galvanized steel structure, the 'Side Beam' will provide many more years of rust-free operation. The Deck and Guard Rails will provide decades of maintenance-free operation.
- **Easier Installation** - The 'Space-Frame' support weighs a fraction of the more traditional-style steel beams. The Deck and Guard Rail materials are much lighter than wood or other alternatives. This lighter weight generally means smaller abutments and less heavy equipment for installation.

BRIDGE SIZES AVAILABLE:

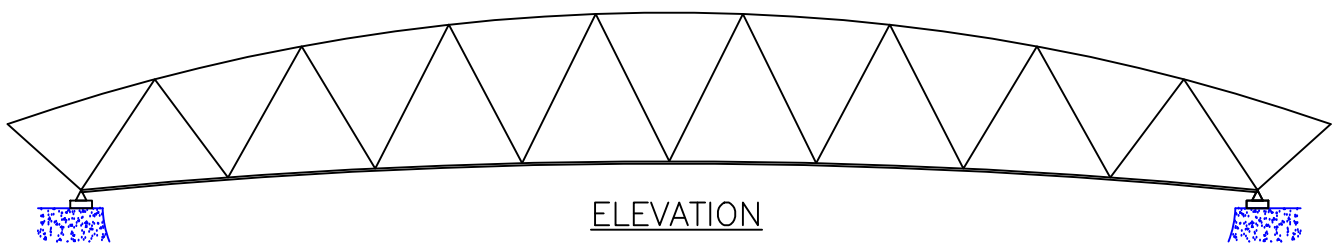
- Custom lengths up to 150'
- Custom widths up to 24'

WE PROVIDE:

- Engineering (bridge & foundations)
- All parts required to assemble bridge
- Delivery to your site
- Full turn-key installation



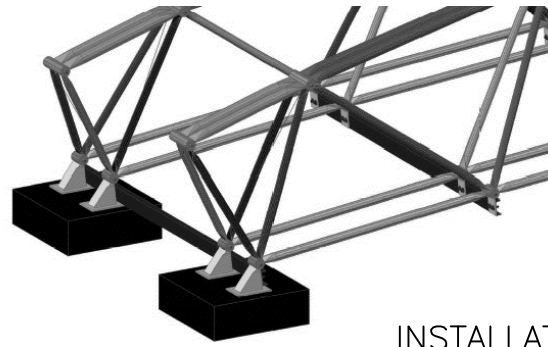
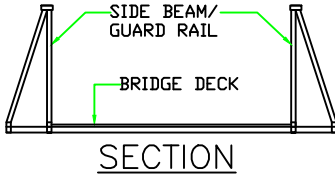
PLAN



ELEVATION

LOAD CAPACITIES:

- Engineered to requirements
- Standard Uniform Live Load = 85 PSF
- Vehicular Live Load = 4,000 lb, 6,000 lb, 8,000 lb, or 10,000 lb based on bridge application



INSTALLATION

BASIC PARAMETERS:

- Side beams
- Size of beams based on bridge size and load requirements

BRANDING OPTIONS:

Your Logo embossed on the bridge deck!



A great feature to promote the strength of your unique brand.

MATERIALS - COATED STEEL AND FIBER REINFORCED POLYMERS:

- Steel tubes coated with proprietary coating - Gator Shield
- Patented Aluminum Hub system for Space Frame Beam
- Gelcoat - Polyester neo pentyl glycol type - non-fading, non-chalking, ultraviolet stabilized and scratch resistant.
- Resin - Fire retardant polyester type brominated reactor blended resin
- Glass - Fibers of glass to suit resin system
- Fine Aggregates for slip resistant deck surfaces
- Stainless steel bolts may be used for some connections
- High Density Polyethylene may be used in some guard rail options



PRICES:

The Engineering Technology of the Space Frame allows us to achieve the structural capacities with considerably less steel material compared to traditional industrial steel beams. In many designs, the HyBridge series bridge will be the most cost-effective alternative for bridge spans of 50' to 150'. For your specific needs, contact us and you will get a quote within 3 business days.