

THE RUBBLE STONE

This bridge features side fascias that emulate bridges that were created with 'whatever rock was available'



The Links Bridges Advantage:

Our bridges really do out-perform the alternatives:

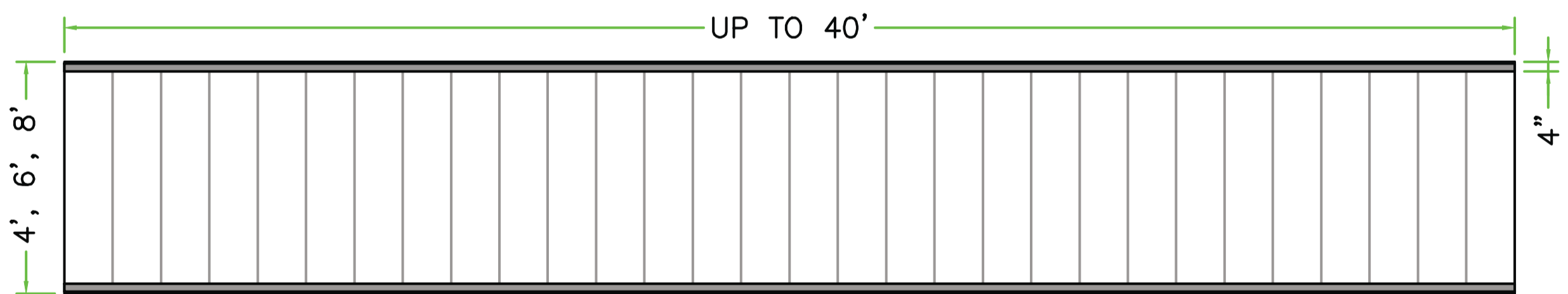
- **Longest Lasting** - Bridges will retain their structural integrity and appearance for 50+ years, far superior to any alternative using wood or metal components.
- **Less Maintenance** - Never require painting, rust removal, replacing of rotting boards.
- **Easy Installation** - Bridges up to 50' are delivered in one piece ready for immediate installation and use.

Bridge Sizes Available:

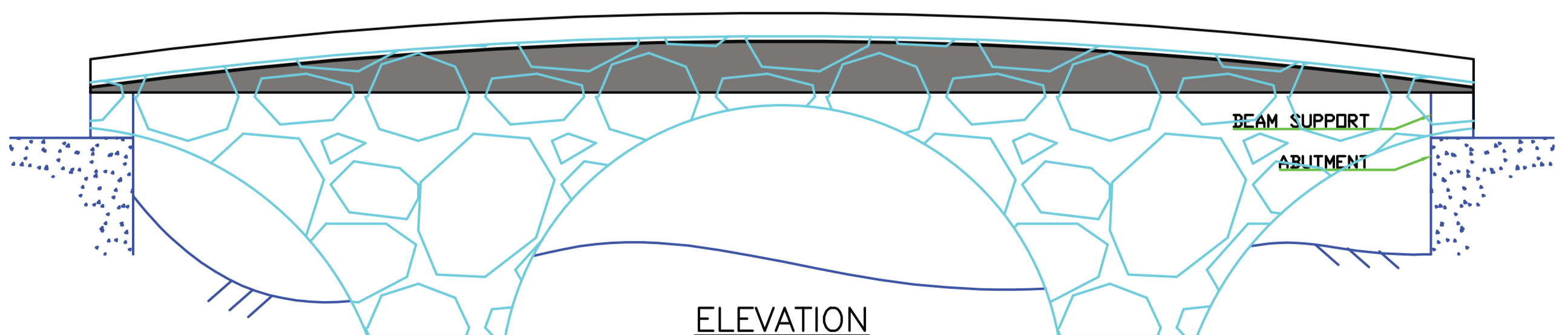
- Custom lengths 20' to 40'
- Standard widths 4', 6', and 8'
- Custom widths available

We Provide:

- Engineering (bridge & foundations)
- Custom manufactured bridge
- Delivery to your site
- Installation support or optional turn-key installation



PLAN



ELEVATION

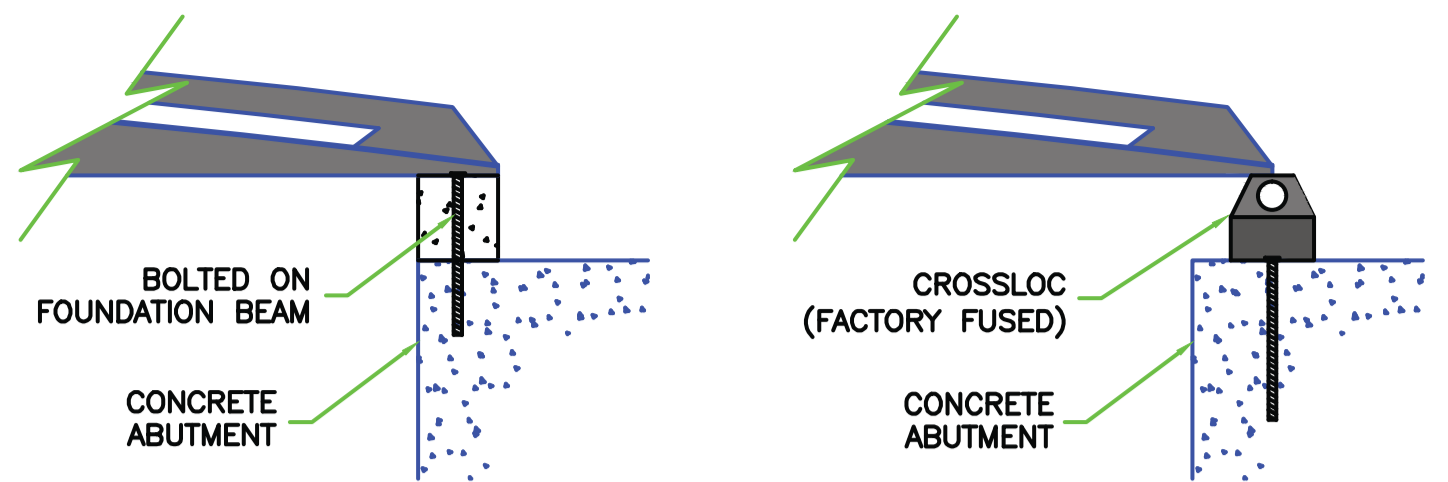


Load Capacities:

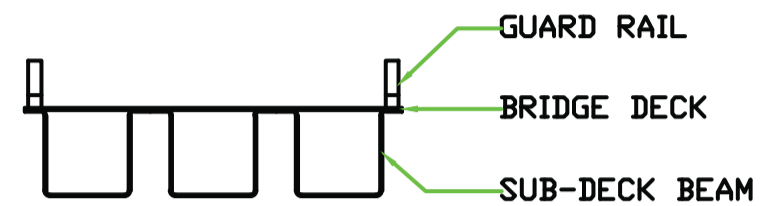
- Engineered to requirements
- Standard Uniform Live Load = 100 PSF
- Vehicular Live Load = 4,000 lb, 6,000 lb, 8,000 lb, or 10,000 lb based on bridge application

Basic Parameters:

- Sub-deck beams
- # and size of beams based on size and load requirements



TYPICAL INSTALLATION



SECTION



Materials - Fiber Reinforced Polymers:

- Gelcoat - Polyester neo pentyl glycol type -non-fading, non-chalking, ultraviolet stabilized and scratch resistant
- Resin - Fire retardant polyester type brominated reactor blended resin
- Glass - Fibers of glass to suit resin system
- Fine Aggregates for slip resistant deck surfaces
- Stainless steel bolts may be used for some connections
- High Density Polyethylene may be used in some guard rail options

Prices:

Bridge prices are based on length, width and loading factors. As a bridge gets longer, the price per foot generally increases as the structural beams get larger. For your specific needs, contact us and you will get a quote by no later than the next business day.

Branding Options:

Your Logo embossed on the bridge deck

